

# 320 GX

## HYDRAULIC EXCAVATOR



---

<b>Engine Power</b>	
ISO 14396:2002	108 kW (145 hp)
ISO 14396:2002 (DIN)	147 hp (metric)
<b>Operating Weight</b>	20 500 kg (45,300 lb)

Cat® C4.4 engine emits equivalent to U.S. EPA Tier 3 and EU Stage IIIA.



# THE NEW CAT® 320 GX

FEATURES FOR FAST PAYBACK<sup>1</sup>

Introducing the 320 GX Hydraulic Excavator – our economy model with all the reliability and ease of operation you expect from a Cat® excavator, with easy maintenance and lower cost features designed to give you a faster return on your equipment investment.



## CAT® EXCAVATORS

Cat excavators offer you more choices than ever for your business.

- + MORE MODEL OPTIONS
- + MORE FUEL EFFICIENCY
- + MORE PRICE POINTS

Ready to help you make your business stronger, Cat excavators give you new ways to get the most work done at the lowest cost so you can put more money in your pocket.

<sup>1</sup> Payback period may vary depending on purchase price, interest rates, down payment, fuel consumption, maintenance costs, local rental rates, and other factors as applicable. Talk to your local Cat dealer about estimated payback period.

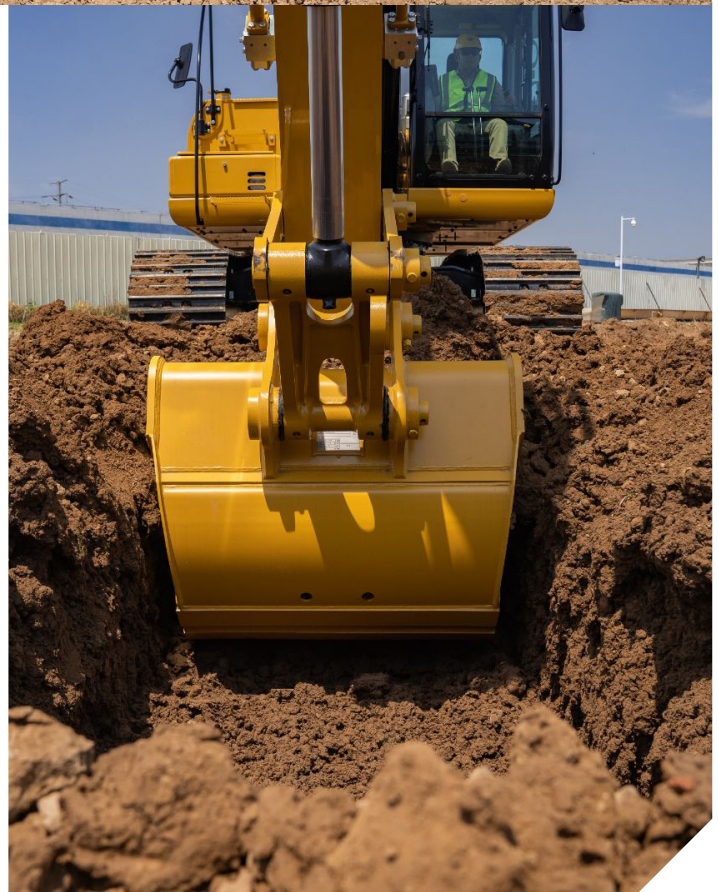
EASY TO

# OPERATE AND MAINTAIN



**Trust Caterpillar's time-proven engineering and manufacturing know-how for easy operation and excellent reliability.**

- + Stable and responsive design increases jobsite efficiency.
- + Boom, stick, and bucket linkages are built to withstand typical 20-ton work demand, so you can be confident working in a wide variety of applications.
- + Automatic hydraulic oil warm up makes work more efficient and helps prevent premature wear of components, so you get longer service life.
- + Cat undercarriage comes with track pins and bushings grease sealed to enhance performance and service life.



# LOWER MAINTENANCE COSTS

INCREASE YOUR PROFIT



## UP TO 20%

### LOWER MAINTENANCE COSTS

Better filters with extended maintenance intervals mean you will do more work with less downtime and lower cost. In fact, the 320 GX has maintenance-free batteries and a hydraulic oil system that requires no maintenance for 3,000 hours. When you do have to perform maintenance, filters and drains are grouped together to make it quick and easy.

### MAKE MANAGING ASSETS EASIER

**Cat link** telematics take the complexity out of managing your assets. Product Link™ automatically collects data like maintenance alerts, machine location, and fuel use. You can access the data anytime, anywhere with VisionLink®. Use it to make informed decisions that will simplify maintenance, boost productivity, lower costs, and improve safety and security on your jobsite.

MAINTENANCE INTERVAL IMPROVEMENTS	320 GX	D2 SERIES
	Hours	Hours
Replace Hydraulic Oil Case Drain Filter	No filter needed	Initial 250 + Every 1,000
Replace Hydraulic Oil Pilot Filter	No filter needed	Initial 250 + Every 1,000
Replace Hydraulic Oil Return Filter	Every 3,000	Initial 250 + Every 2,000
Change Swing Drive Oil	Initial 500 + Every 1,000	Initial 250 + Every 1,000
Replace Fuel Filters	Every 1,000	Every 500
Clean Fuel Tank Strainer	When needed	Every 500
Replace Fuel Tank Cap Filter	Every 2,000	Every 1,000

# FAST PAYBACK

A new choice to help make your business stronger, the Cat 320 GX features easy operation and maintenance, plus productivity balanced with low costs for fast payback.



## LOW OWNING COSTS

The 320 GX features simplified options for reduced acquisition costs to help you get the most work done at a lower cost. Everything about the 320 GX, like its robust structures, access to components, and widely available parts, is designed to put more money in your pocket.

## LOW FUEL CONSUMPTION

Synchronized engine and electrohydraulic systems lower fuel consumption. Smart mode helps you further reduce fuel costs by automatically adapting engine speed for your specific application.

## LOW MAINTENANCE COSTS

Extended maintenance intervals, better filters, maintenance-free batteries, and a hydraulic oil system that requires no maintenance for 3,000 hours all contribute to low maintenance costs.



## REDUCE FUEL CONSUMPTION BY UP TO 15% <sup>1</sup>

The Cat C4.4 engine and electrohydraulic system work in sync to help you move plenty of material while using less fuel.

## WORK SMART. SAVE MONEY.

The Cat 320 GX is equipped with two modes to help manage fuel consumption for your specific applications – power mode and smart mode.

Power mode is the traditional setting where you can manually dial engine speed up or down based on your work. Smart mode automatically adapts engine speed for you – up for high productivity and down for lighter loading, resulting in higher operating efficiency.

<sup>1</sup> Compared to 320D2 GC Tier 3 global fuel burn averages.

## FUEL SAVINGS ADD UP



FUEL BURN PER YEAR

320 GX **21 960 L**

THE 320 GX ADVANTAGE  
**3960 L SAVED!**

320D2 GC **25 920 L**

### SCENARIO

Excavators completing typical excavation work.

### CALCULATION

**320D2 GC:**  
14.4 L/HR x 1,800 HR/YR=25 920 L/YR

**320 GX:**  
12.2 L/HR x 1,800 HR/YR=21 960 L/YR

# BUILT-IN SAFETY

## LOOK OUT FOR YOUR PEOPLE AND YOUR EQUIPMENT

- + Smooth handrails and anti-skid steps make getting on and off the machine more secure.
- + Daily maintenance checks can be performed with most points accessible from ground level, making the maintenance faster, easier, and safer.
- + The storage box lid is lockable to protect your gear.
- + The cab's wider field of view and available rearview camera enhance jobsite visibility.

## 1,000 WAYS TO STAY SAFE.

FACT:

**SLIPPING** IS ONE OF THE **BIGGEST CONTRIBUTORS** TO WORKPLACE INJURIES.\*



OUR ANTI-SKID PLATES FEATURE

**1,000+** INDIVIDUAL PERFORATIONS FOR BETTER TRACTION

\*SOURCE: [HTTPS://WWW.OSHA.GOV/DTE/GRANT\\_MATERIALS/FY07/SH-16625-07/SLIPSTRIPSFALLS.PPT](https://www.osha.gov/dte/grant_materials/fy07/sh-16625-07/slipstripsfalls.ppt)



# CAB TAKES THE HARD OUT OF WORK

Comfort and movement efficiency help keep operators productive and alert all shift long. The standard seat is wide and adjustable to suit individual operator preferences. The controls, including push-button start, are simple to use and easy to reach, allowing you to operate comfortably with minimal twists and turns.



## SMART DESIGN

Operator ID remembers your preferred settings for power mode, joystick pattern, and joystick response. Just plug in your password and go to work. Seat adjustments, touchscreen monitor, and controls are conveniently located to reduce reaching and twisting.

## ALL-ROUND VISIBILITY

Large windows and narrow cab pillars enable excellent visibility in all directions from the operator seat. A rearview camera is an available option.

## ACCESS, CONNECTIVITY, AND STORAGE

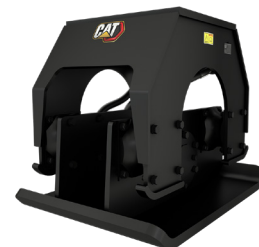
The AM/FM radio includes Bluetooth® technology, USB, and auxiliary ports for connecting and charging devices; a 24V DC outlet makes phone charging even faster. Storage space in front of the controls can hold a large cup and wide cell phone. Storage behind the seat can hold a large lunchbox and other items.



**BUCKETS**



**HYDRAULIC  
HAMMERS**



**VIBRATORY  
PLATES**

## INCREASE YOUR PRODUCTIVITY AND PROFIT WITH CAT ATTACHMENTS

You can easily expand the performance of your machine by using Cat attachments. Each Cat attachment is designed to fit the weight and horsepower of the Cat excavator for improved performance, safety, and stability.



When you buy Cat equipment, you're getting so much more than the machine. You're also getting the support of a best-in-class dealer network backed by a range of flexible solutions, technology, tools, and more. It's all about support that's built around your success.

# GET MORE THAN A MACHINE



- + Customer Value Agreements (CVA)
- + Cost-saving service and repair options
- + Quality parts and precision components
- + Financing solutions
- + Rental and used equipment

## VALUE MADE EASY

A Cat customer value agreement (CVA) starts with hassle-free maintenance featuring genuine Cat parts right on schedule. Security of expert dealer support through an equipment protection plan (EPP) can be included to minimize surprise costs on covered repairs. Equipment health management provides you with machine alerts and information, as well as inspections and fluid health monitoring to give you more peace of mind. Hassle-free ownership simply means all elements of your CVA are part of one agreement that can be included in your monthly machine payment.

# TECHNICAL SPECIFICATIONS

See [cat.com](http://cat.com) for complete specifications.

ENGINE		
Engine Model	Cat® C4.4	
Engine Power ISO 14396:2002	108 kW	145 hp
ISO 14396:2002 (DIN)	147 hp (metric)	
Net Power ISO 9249:2007	104 kW	139 hp
ISO 9249:2007 (DIN)	141 hp (metric)	
Bore	105 mm	4 in
Stroke	127 mm	5 in
Displacement	4.4 L	269 in <sup>3</sup>
Biodiesel Capability	Up to B20	

- Advertised power is tested per the specified standard in effect at the time of manufacture.
- Net power advertised is the power available at the flywheel when the engine is equipped with fan, air intake system, exhaust system, and alternator.
- Engine speed at 2,000 rpm.

HYDRAULIC SYSTEM		
Main System – Maximum Flow – Implement	429 L/min (214.5 L/min x 2 pumps)	113 gal/min (56.7 gal/min x 2 pumps)
Maximum Pressure – Equipment – Normal	35 000 kPa	5,075 psi
Maximum Pressure – Travel	35 000 kPa	5,075 psi
Maximum Pressure – Swing	25 000 kPa	3,625 psi

SWING MECHANISM		
Swing Speed	11.07 rpm	
Maximum Swing Torque	74 kN-m	54,580 lbf-ft

WEIGHTS		
Operating Weight	20 500 kg	45,300 lb
Standard undercarriage, Reach boom, R2.7 (8'9") stick, GD 0.93 m <sup>3</sup> (1.22 yd <sup>3</sup> ) bucket, 790 mm (31") triple grouser shoes, and 3600 kg (7,940 lb) counterweight.		
Operating Weight	19 900 kg	43,900 lb
Standard undercarriage, Reach boom, R2.7 (8'9") stick, GD 0.93 m <sup>3</sup> (1.22 yd <sup>3</sup> ) bucket, 600 mm (24") triple grouser shoes, and 3600 kg (7,940 lb) counterweight.		

SERVICE REFILL CAPACITIES		
Fuel Tank	390 L	103 gal
Cooling System	24.5 L	6.5 gal
Engine Oil (with filter)	15 L	4 gal
Swing Drive	12 L	3.2 gal
Final Drive (each)	4.5 L	1.2 gal
Hydraulic System (including tank)	218 L	57.6 gal
Hydraulic Tank (including suction pipe)	115 L	30.4 gal

DIMENSIONS		
<b>Boom</b>	<b>Reach 5.7 m (18'8")</b>	
<b>Stick</b>	<b>Reach 2.7 m (8'9")</b>	
<b>Bucket</b>	<b>GD 0.93 m<sup>3</sup> (1.22 yd<sup>3</sup>)</b>	
Shipping Height (top of cab)	2950 mm	9'8"
Handrail Height	3010 mm	9'11"
Shipping Length	9570 mm	31'5"
Tail Swing Radius	2830 mm	9'3"
Counterweight Clearance	1040 mm	3'5"
Ground Clearance	460 mm	1'6"
Track Length	4080 mm	13'5"
Length to Center of Rollers	3270 mm	10'9"
Track Gauge	2200 mm	7'3"
Transport Width – 600 mm (24") shoes	2800 mm	9'2"
Transport Width – 790 mm (31") shoes	2990 mm	9'10"

WORKING RANGES AND FORCES		
<b>Boom</b>	<b>Reach 5.7 m (18'8")</b>	
<b>Stick</b>	<b>Reach 2.7 m (8'9")</b>	
<b>Bucket</b>	<b>GD 0.93 m<sup>3</sup> (1.22 yd<sup>3</sup>)</b>	
Maximum Digging Depth	6430 mm	21'1"
Maximum Reach at Ground Level	9580 mm	31'5"
Maximum Cutting Height	9290 mm	30'6"
Maximum Loading Height	6450 mm	21'2"
Minimum Loading Height	2460 mm	8'1"
Maximum Depth Cut for 2440 mm (8'0") Level Bottom	6250 mm	20'6"
Maximum Vertical Wall Digging Depth	5510 mm	18'1"
Minimum Working Equipment Radius	3680 mm	12'1"
Bucket Digging Force (ISO)	136 kN	30,570 lbf
Stick Digging Force (ISO)	106 kN	23,830 lbf

# STANDARD & OPTIONAL EQUIPMENT

Standard and optional equipment may vary. Consult your Cat dealer for details.

BOOMS & STICKS	STANDARD	OPTIONAL
5.7 m (18'8") Reach boom	●	
2.5 m (8'2") Reach stick		● <sup>1</sup>
2.7 m (8'10") Reach stick	● <sup>2</sup>	
CAB	STANDARD	OPTIONAL
Sound suppressed with viscous mounts	●	
High-resolution 203 mm (8") LCD touchscreen monitor	●	
Mechanically adjustable seat with headrest	●	
51 mm (2") seat belt	●	
Automatic bi-level air conditioner	●	
Keyless push-to-start engine control	●	
Floor-mounted adjustable consoles	●	
1-button joystick	●	
3-button joystick		●
AM/FM radio with Bluetooth® and USB	●	
24V DC outlet	●	
Cup holder and storage compartments	●	
70/30 tempered glass windshield	●	
Upper radial wiper with washer	●	
Openable steel hatch	●	
Dome light	●	
Washable floor mat	●	
CAT TECHNOLOGIES	STANDARD	OPTIONAL
Cat® Product Link™	●	
ELECTRICAL SYSTEM	STANDARD	OPTIONAL
950 CCA maintenance-free batteries (x2)	●	
Electrical disconnect switch	●	
LED boom, chassis, and cab lights	●	
LED left-side boom light	●	
LED right-side boom light		●
ENGINE	STANDARD	OPTIONAL
Cat C4.4 single turbo diesel engine	●	
Two selectable modes: Power, smart	●	
Up to 4500 m (14,764 ft) altitude capability	●	
52°C (125°F) high-ambient cooling capability	●	
-25°C (-13°F) cold start capability	●	
Electric fuel priming pump	●	
Two-stage fuel filtration system	●	
Sealed double-element air filter with precleaner	●	

HYDRAULIC SYSTEM	STANDARD	OPTIONAL
Electronic main control valve, hammer ready	●	
Back-to-back, electronically controlled pumps	●	
Boom and stick regeneration circuits	●	
Automatic hydraulic oil warmup	●	
Automatic two-speed travel	●	
Hammer lines		●
Hammer return filter		● <sup>1</sup>
High performance hydraulic return filter	●	
SAFETY AND SECURITY	STANDARD	OPTIONAL
Anti-skid plating with countersunk bolts	●	
FOGS with matching lights		●
Handrail and handhold	●	
Lockable external tool/storage box	●	
Rearview camera		●
Rear- and right-side-view cameras		● <sup>3</sup>
Rollover protective structure (ROPS)		● <sup>3</sup>
Signaling/warning horn	●	
Hydraulic lockout lever	●	
Travel alarm		● <sup>4</sup>
Swing alarm		●
Lockout device for disconnect switch		● <sup>3</sup>
SERVICE AND MAINTENANCE	STANDARD	OPTIONAL
Grouped engine oil and fuel filters	●	
Radiator screen		●
Scheduled Oil Sampling (S•O•S <sup>SM</sup> ) ports	●	
UNDERCARRIAGE AND STRUCTURES	STANDARD	OPTIONAL
600 mm (24") triple grouser track shoes		●
790 mm (31") triple grouser track shoes		●
Grease lubricated track link	●	
Center track guiding guard	●	
Bottom guards	●	
Travel motor guards	●	
3600 kg (7,940 lb) counterweight	●	
Tie-down points	●	

<sup>1</sup> Africa, Middle East, Eurasia and South America only.

<sup>2</sup> Standard Indonesia, Sri Lanka and Southeast Asia.

<sup>3</sup> Mandatory for Kingdom of Saudi Arabia; not available in other regions.

<sup>4</sup> Standard South America.

**Not all features are available in all regions. Please check with your local Cat dealer for specific offering availability in your area.**  
For additional information, refer to the Technical Specifications brochures for the 320 GX available at [www.cat.com](http://www.cat.com) or your Cat dealer.

For more complete information on Cat products, dealer services and industry solutions, visit us on the web at [www.cat.com](http://www.cat.com).

VisionLink is a trademark of Caterpillar Inc., registered in the United States and in other countries.

Materials and specifications are subject to change without notice. Featured machines in photos may include additional equipment. See your Cat dealer for available options.

©2022 Caterpillar. All Rights Reserved. CAT, CATERPILLAR, LET'S DO THE WORK, their respective logos, Product Link, S•O•S, "Caterpillar Corporate Yellow", the "Power Edge" and Cat "Modern Hex" trade dress as well as corporate and product identity used herein, are trademarks of Caterpillar and may not be used without permission.

[www.cat.com](http://www.cat.com) [www.caterpillar.com](http://www.caterpillar.com)

AEXQ3300-02  
Replaces AEXQ3300-01  
Build Number: 05C  
(Afr-ME, Eurasia, Indonesia,  
Sri Lanka, S Am [except Brazil],  
SE Asia, Taiwan)  
Build Number: 05D  
(Kingdom of Saudi Arabia)

